

SEGÂH PEŞREV

Devr-i Kebîr

Yusuf Paşa

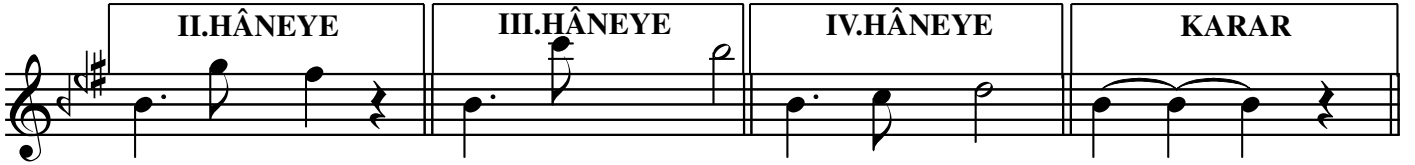
I.HANE

The I.HANE section consists of five staves of music. The first staff begins with a treble clef, a key signature of two sharps (D major), and a 2/4 time signature. The melody is written in a single line. The notation includes various rhythmic values such as quarter notes, eighth notes, and sixteenth notes, along with accidentals like sharps and naturals. The second staff continues the melody with similar rhythmic patterns. The third staff features a more complex rhythmic structure with sixteenth notes and eighth notes. The fourth staff continues the melody with a mix of rhythmic values. The fifth staff concludes the section with a final cadence.

TESLİM

The TESLİM section consists of four staves of music. The first staff begins with a treble clef, a key signature of two sharps (D major), and a 2/4 time signature. The melody is written in a single line. The notation includes various rhythmic values such as quarter notes, eighth notes, and sixteenth notes, along with accidentals like sharps and naturals. The second staff continues the melody with similar rhythmic patterns. The third staff features a more complex rhythmic structure with sixteenth notes and eighth notes. The fourth staff concludes the section with a final cadence.

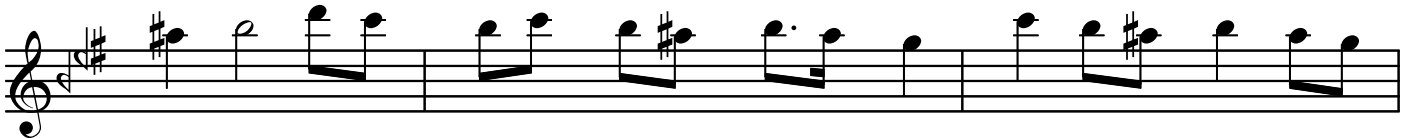
Segâh Peşrev (2.Sayfa)



II.HANE



III.HANE



Segâh Beste (3.Sayfa)



IV.HANE

